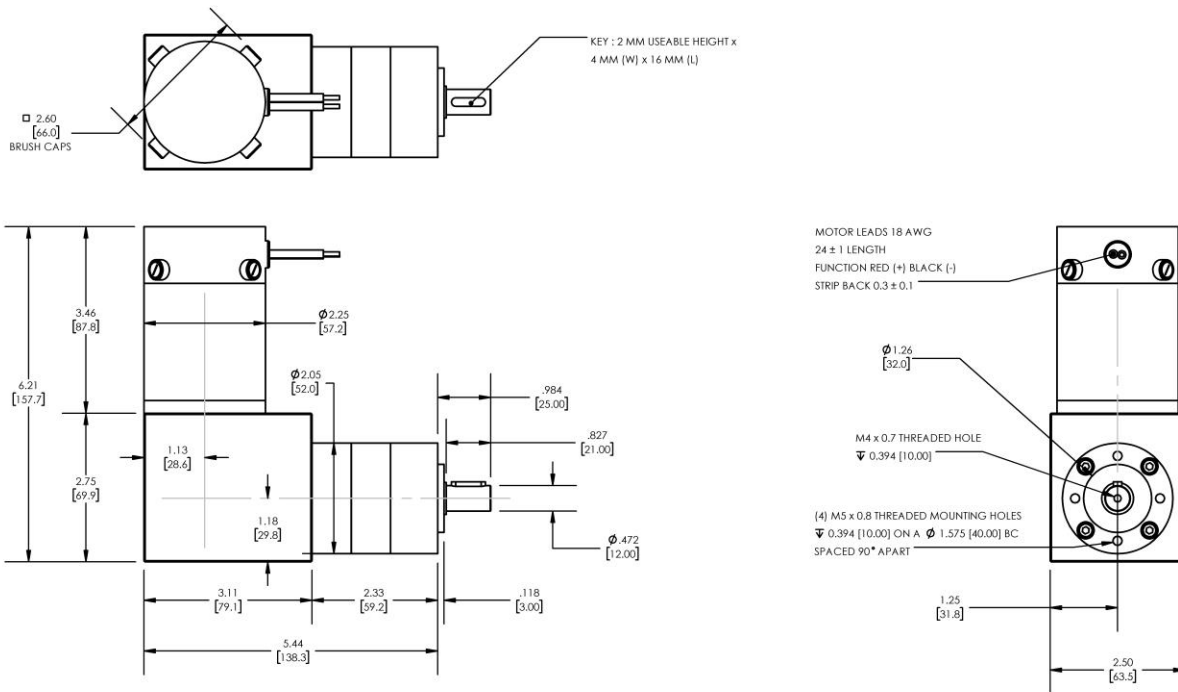




REVERSIBLE BRUSHED DC RIGHT-ANGLED GEARMOTOR

Model Number:

MMP S22-346G-24V GRA52-019



PLANETARY GEARMOTOR OUTPUT PARAMETERS:	VALUE	UNITS	TOLERANCE
Gearhead Ratio (exact)	19.20 : 1		
Gearhead Shaft Output Speed (at full-load)	163	RPM	MAX
Gearmotor Rated Continuous Torque	50	In-Lbs	MAX
Gearmotor Rated Peak Torque	175++	In-Lbs	----
Gearhead Standard Backlash	45	Arc Minutes	MAX
Gearhead Efficiency	75%	----	----
Output Shaft Radial Load Capacity	72	Lbs	MAX
Output Shaft Axial Load Capacity	23	Lbs	MAX
Gearmotor Total Weight	5.7	Lbs	MAX

++ All Peak Torque values are dependent upon duty. Contact our sales office for details.

DC MOTOR PERFORMANCE PARAMETERS:	VALUE	UNITS	TOLERANCE
Rated DC Voltage	24	DC VOLTS	----
Rated Continuous Current	7.9	AMPERES	----
No-Load Speed	4000	RPM	MAX
Rated Speed	3126	RPM	+/- 15%
Rated Continuous Power Out	128	WATTS	+/- 15%
Rated Continuous Torque	55	OZ-IN	----
Peak Torque (motor only)	194	OZ-IN	----
No-Load Current	1.05	AMPERES	MAX
Back EMF Constant (Ke)	6.0	V/KRPM	+/- 10%
Torque Constant (Kt)	8.1	OZ-IN/AMP	+/- 10%
DC Armature Resistance	0.67	OHMS	+/- 15%
Armature Inductance	0.28	mH	+/- 15%
Armature temperature	155	DEG. C	MAX

NOTES:

- ENCODER & BRAKE OPTIONS AVAILABLE – [FOLLOW THIS LINK FOR DETAILS](#)
- NEMA MOUNTING FLANGE OPTION AVAILABLE – [FOLLOW THIS LINK FOR DETAILS](#)

MIDWEST MOTION PRODUCTS, INC

DESIGN, MANUFACTURING & DISTRIBUTION - MOTION CONTROL EQUIPMENT

www.midwestmotion.com

email: sales@midwestmotion.com